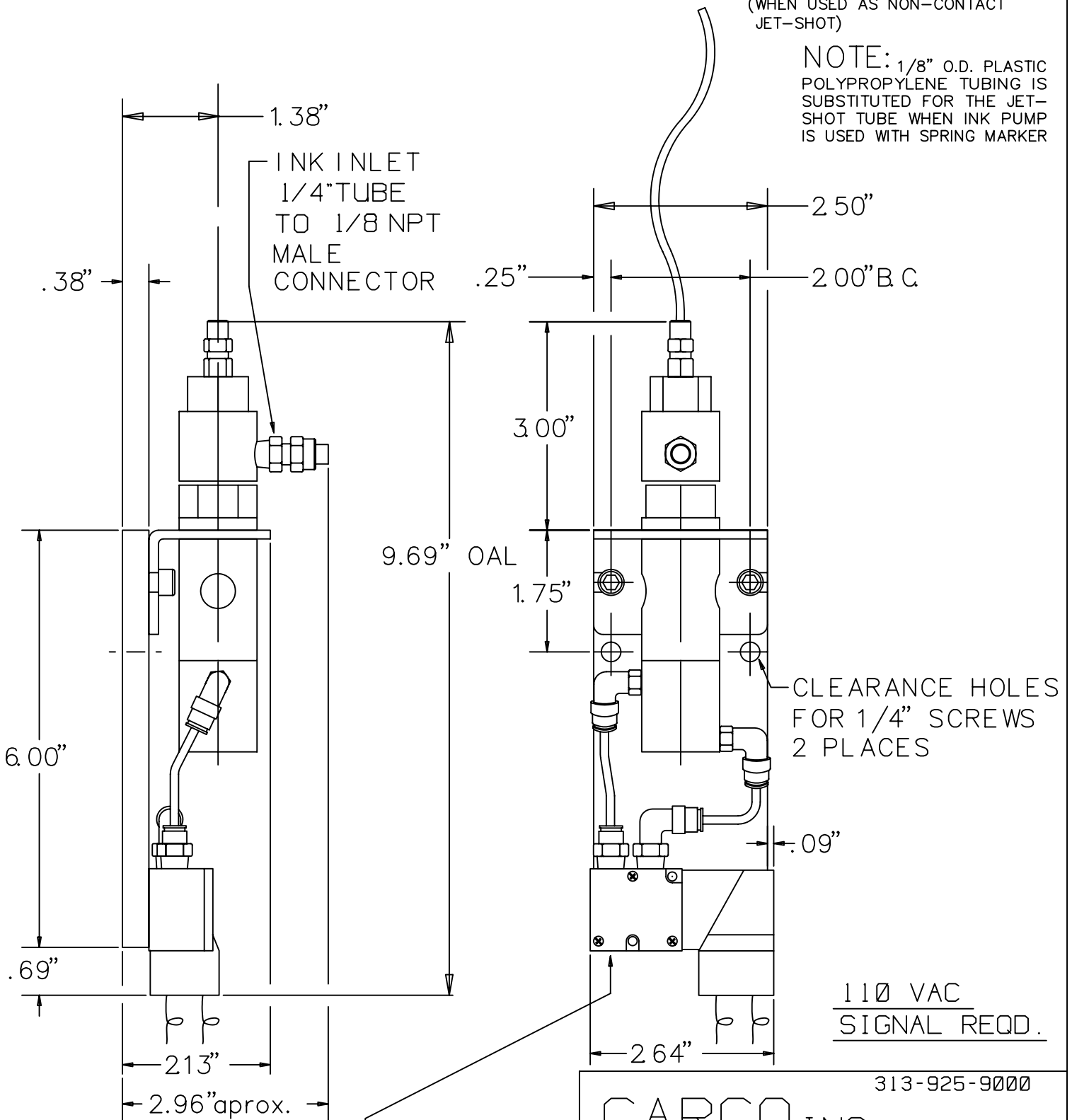


313-925-9000		
CARCO INC.		
10333 SHOEMAKER DETROIT MICH. 48213		
SPRING MARKER		
DRAWN BY M. E.	DATE 6-23-05	ES-641
CHK' D	SCALE 1/2	

TUBE MAY BE BENT
TO DIRECT LOCATION
OF MARK
(WHEN USED AS NON-CONTACT
JET-SHOT)

NOTE: 1/8" O.D. PLASTIC
POLYPROPYLENE TUBING IS
SUBSTITUTED FOR THE JET-
SHOT TUBE WHEN INK PUMP
IS USED WITH SPRING MARKER



60-80 PSI
AIR SUPPLY
1/8 NPT

TRACING TEMPLATE

313-925-9000

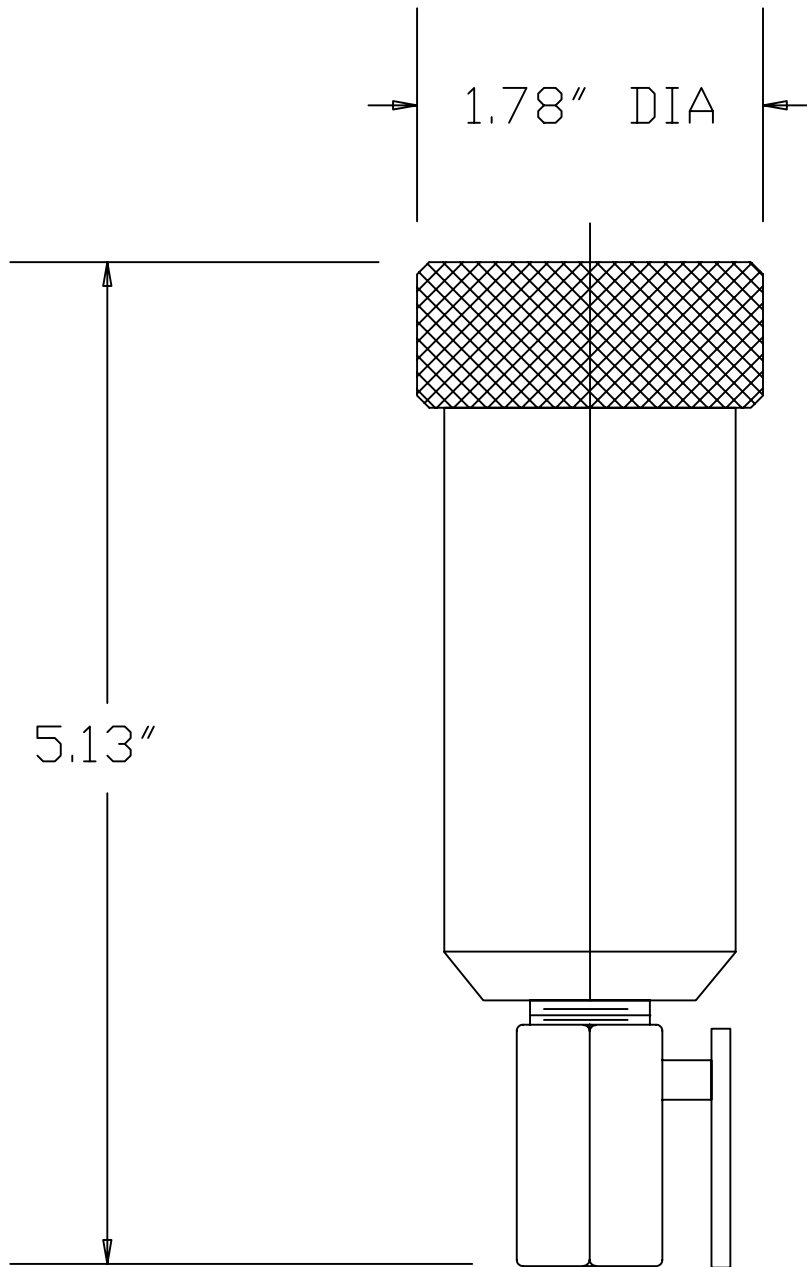
CARCO INC

10333 SHOEMAKER
DETROIT MICH 48213

MARKING DEVICES and SPECIAL INKS

DRAWN BY M. E.	DATE 4-2-03
CHK'D	SCALE HALF

ES-1157



MATERIAL
 NYLON

CAPACITY
 2oz. FLUID

TRACING
TEMPLATE

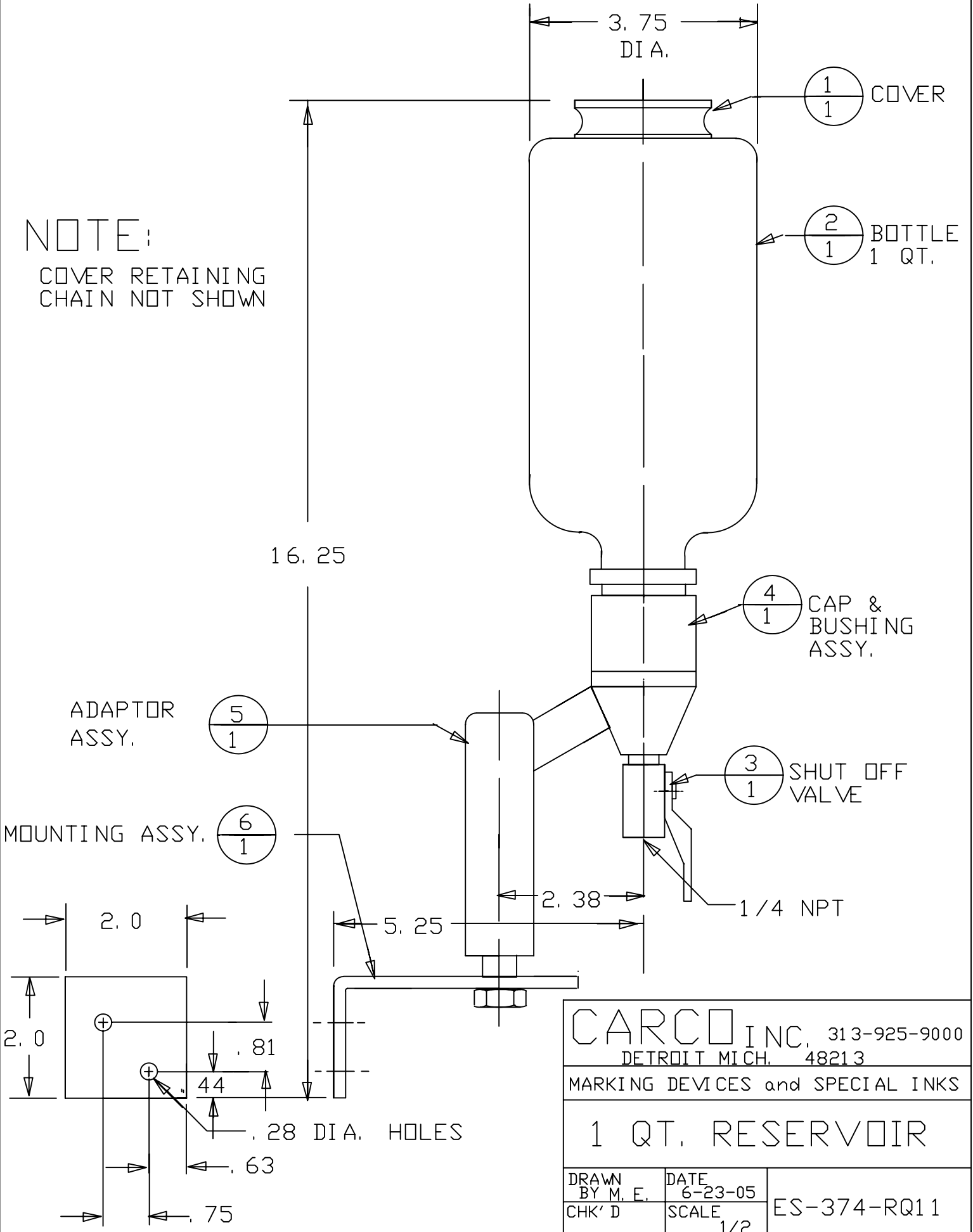
1/4" NPT
 SHUTOFF VALVE

		313-925-9000
CARCO INC.		
10333 SHOEMAKER DETROIT MICH. 48213		
MARKING DEVICES and SPECIAL INKS		
2oz. RESERVOIR W/SHUTOFF VALVE		
DRAWN BY AD	DATE 12/02/05	ES-374-R27
CHK'D	SCALE FULL	

ES-374-RQ1 1

NOTE:

COVER RETAINING
CHAIN NOT SHOWN



CARCO INC., 313-925-9000
DETROIT MICH. 48213

MARKING DEVICES and SPECIAL INKS

1 QT. RESERVOIR

DRAWN BY M. E.	DATE 6-23-05	ES-374-RQ1 1
CHK'D	SCALE 1/2	

PIPING INSTRUCTIONS FOR:

ES-612-A

PIPING AIR

- 1: SUPPLY MAIN AIR (60 TO 80 PSI) TO INK PUMP INLET PORT ON VALVE (ES-1157-C-VE-R27-SM) AND INLET PORT ON MARKER VALVE (ES-376-VE-4).
- 2: RUN ¼" O.D PLASTIC TUBING FROM OUTLET PORTS OF MARKER VALVE (ES-376-VE-4) TO INLET PORTS OF FLOW CONTROLS ON MARKER AIR CYLINDER (ES-641-NR)
- 3: ADJUST FLOW CONTROLS ON AIR CYLINDER TO CONTROL EXTEND & RETRACT SPEED.

PIPING INK LINE

- 1: USING 1/8" O.D. (WHITE) PLASTIC TUBING FROM OUTLET OF INK PUMP TO INLET OF MARKER HEAD. USE POLYPROPYLENE TUBING ONLY.