

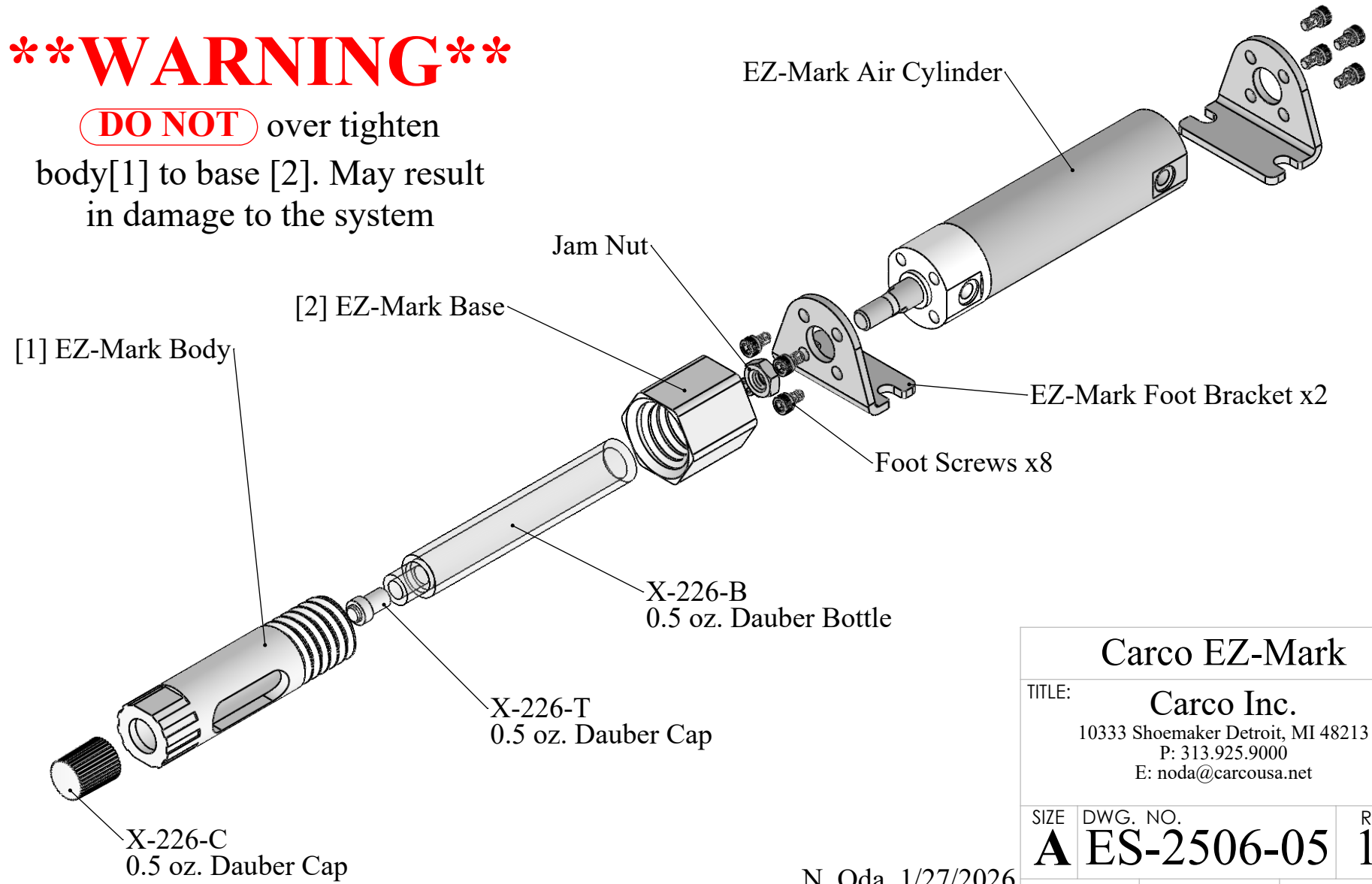
2

1

2" Standard Stroke Length
 Available in +1" intervals
 Magnetic Reed available upon request

****WARNING****

DO NOT over tighten
 body[1] to base [2]. May result
 in damage to the system



Carco EZ-Mark

TITLE: **Carco Inc.**
 10333 Shoemaker Detroit, MI 48213
 P: 313.925.9000
 E: noda@carcousa.net

SIZE	DWG. NO.	REV
A	ES-2506-05	14

N. Oda, 1/27/2026

SCALE: 1:2.5	WEIGHT: N/A	SHEET 2 OF 2
--------------	-------------	--------------

2

1