

ES-1157-C-VE-R27-JT
INK PUMP SYSTEM

CARCO INC. 313-925-9000

10333 SHOEMAKER DR. DETROIT MI. 48213

MARKING DEVICES and SPECIAL INKS

SYSTEM SHEET

DRAWN BY

SL

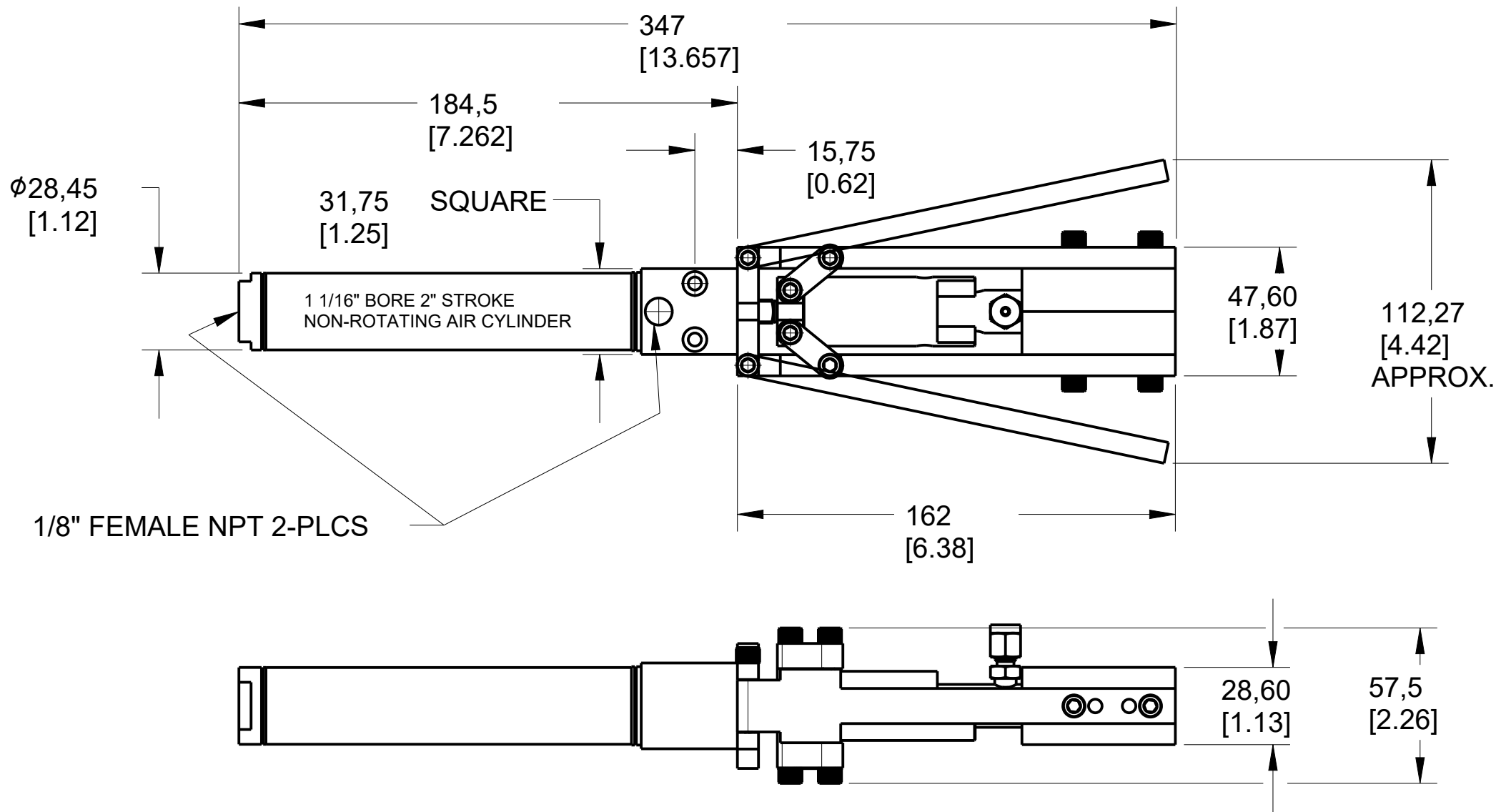
DATE

2021/09/20

CHECKED BY

SCALE

ES-712-A



CARCO INC. 313-925-9000

10333 SHOEMAKER DR. DETROIT MI. 48213

MARKING DEVICES and SPECIAL INKS

AUTO. COVER ASSY.

DRAWN BY

LS

DATE

2021/09/20

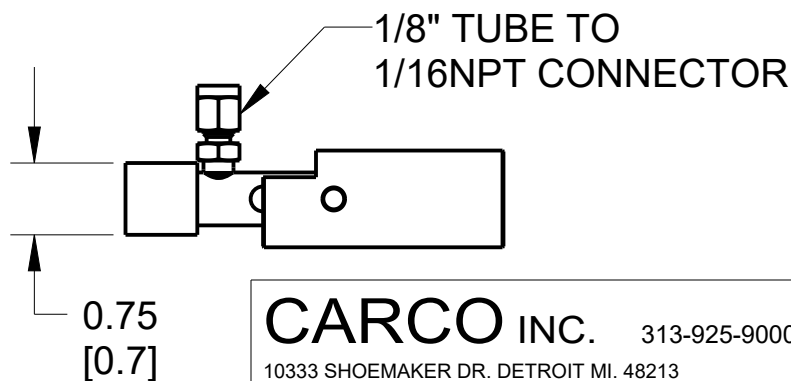
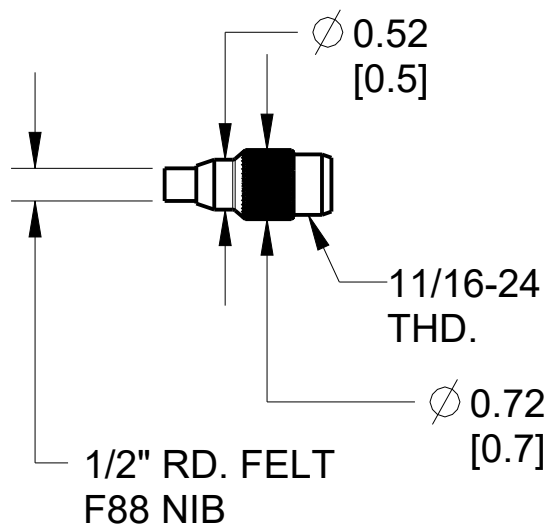
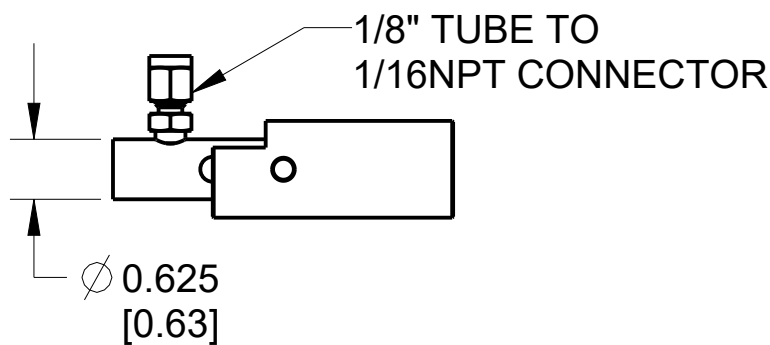
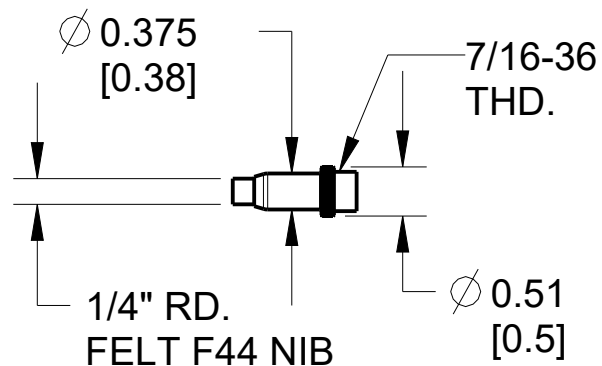
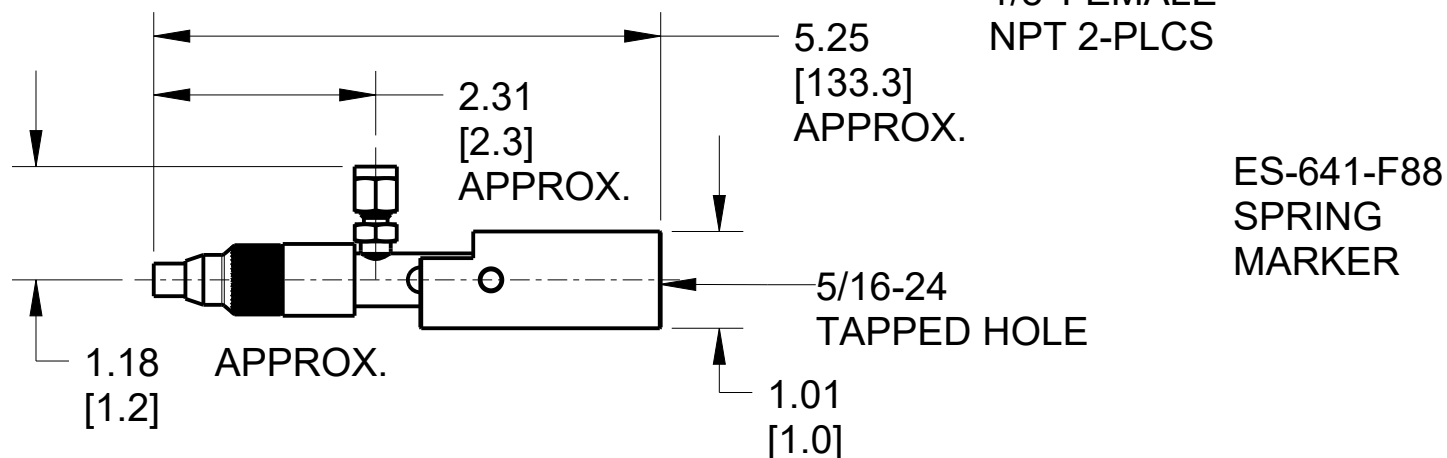
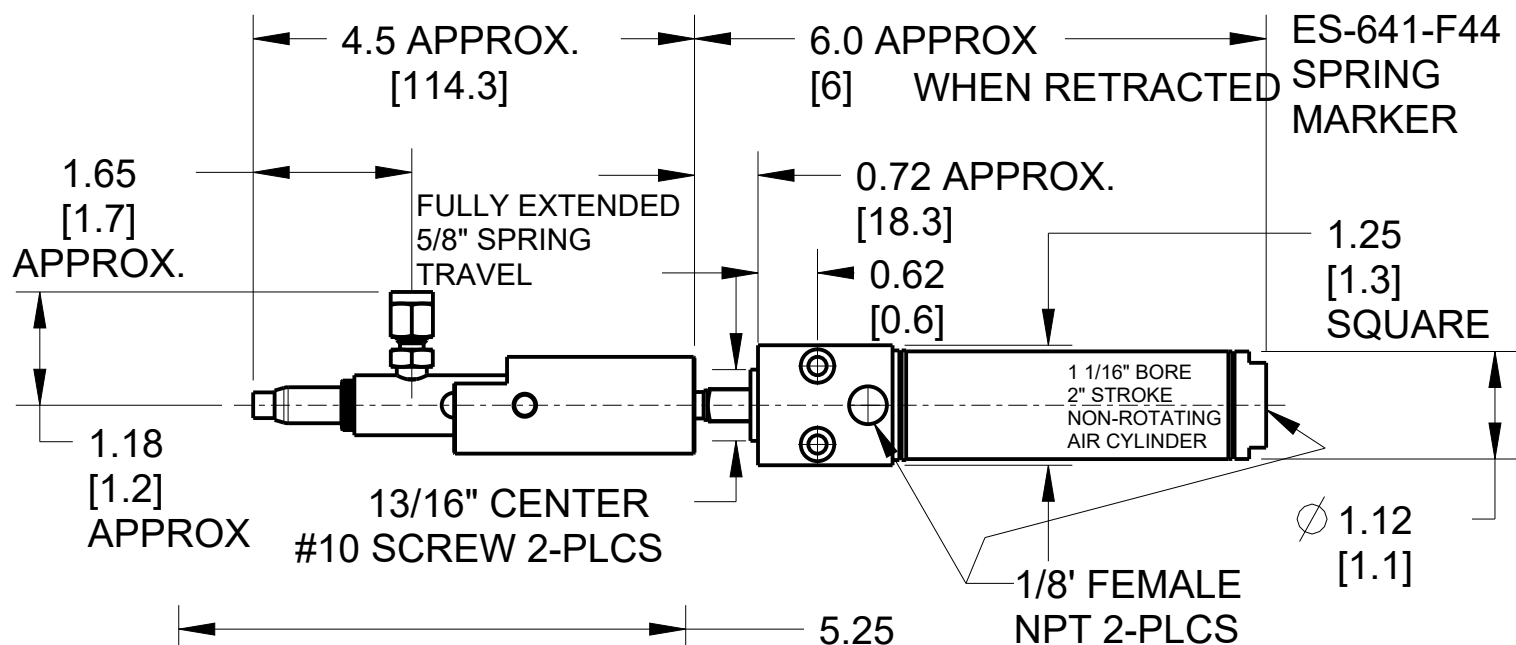
CHECKED BY

-

SCALE

1/2

ES-712



CARCO INC. 313-925-9000

10333 SHOEMAKER DR. DETROIT MI. 48213

MARKING DEVICES and SPECIAL INKS

SPRING MARKER

DRAWN BY

L.S.

DATE

2021/07/22

CHECKED BY

SCALE

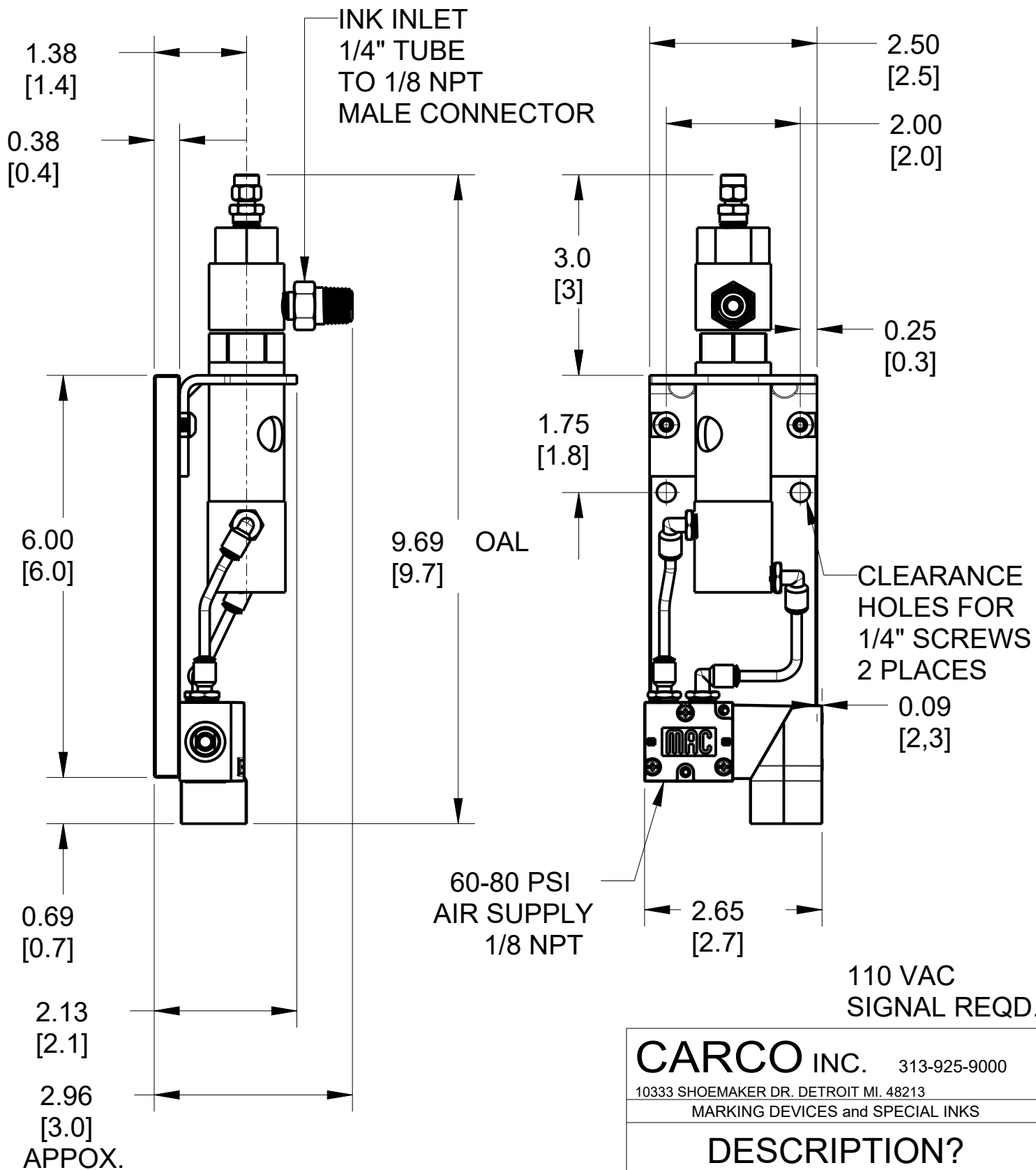
1/2

ES-641

TUBE MAY BE BENT
TO DIRECT LOCATION
OF MARK

(WHEN USED AS NON-CONTACT JET-SHOT)

NOTE: 1/8" O.D. PLASTIC POLYPROPYLENE
TUBING IS SUBSTITUTED FOR THE JET-SHOT
TUBE WHEN INK PUMP IS USED WITH SPRING
MARKER



TRACING TEMPLATE

CARCO INC. 313-925-9000

10333 SHOEMAKER DR. DETROIT MI. 48213

MARKING DEVICES and SPECIAL INKS

DESCRIPTION?

DRAWN BY

L.S.

DATE

2021/07/01

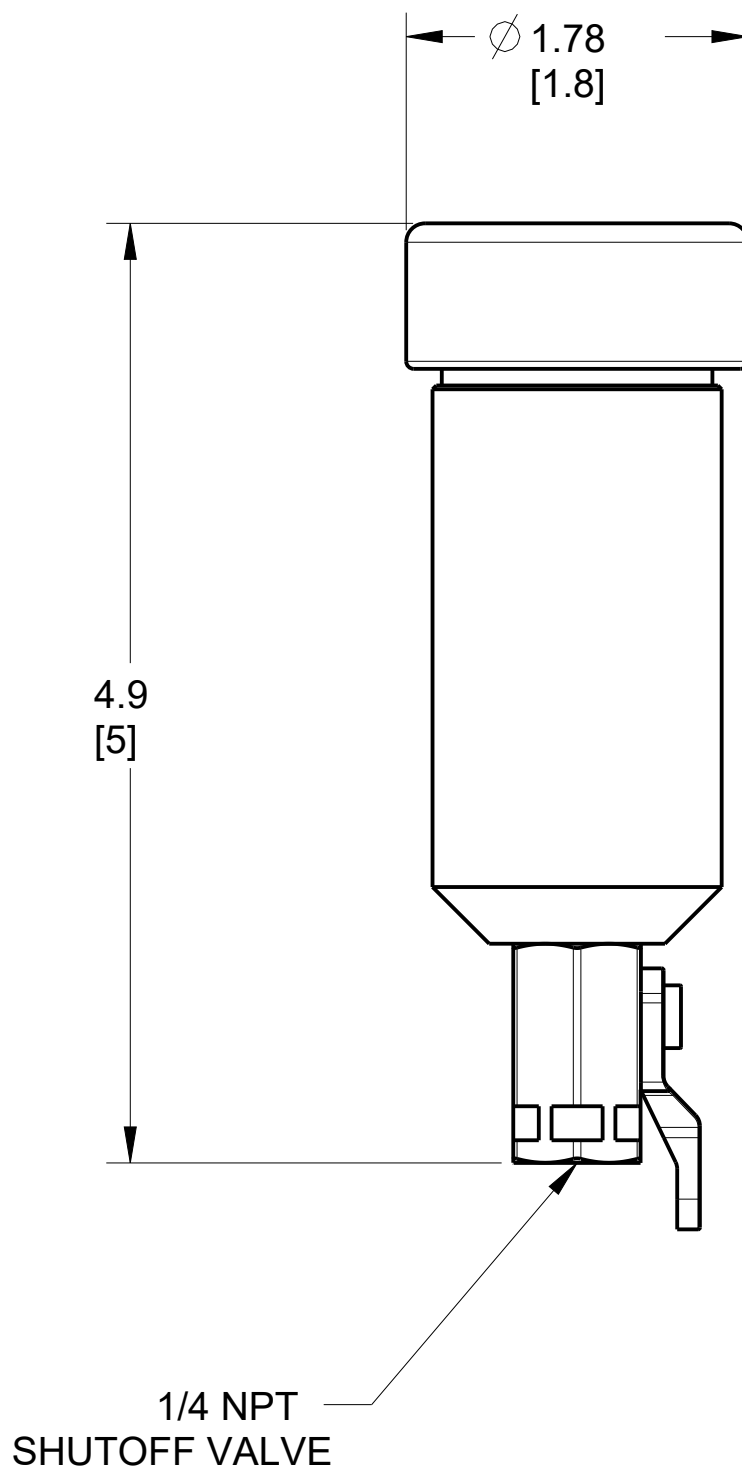
CHECKED BY

D

SCALE

1/2

ES-1157

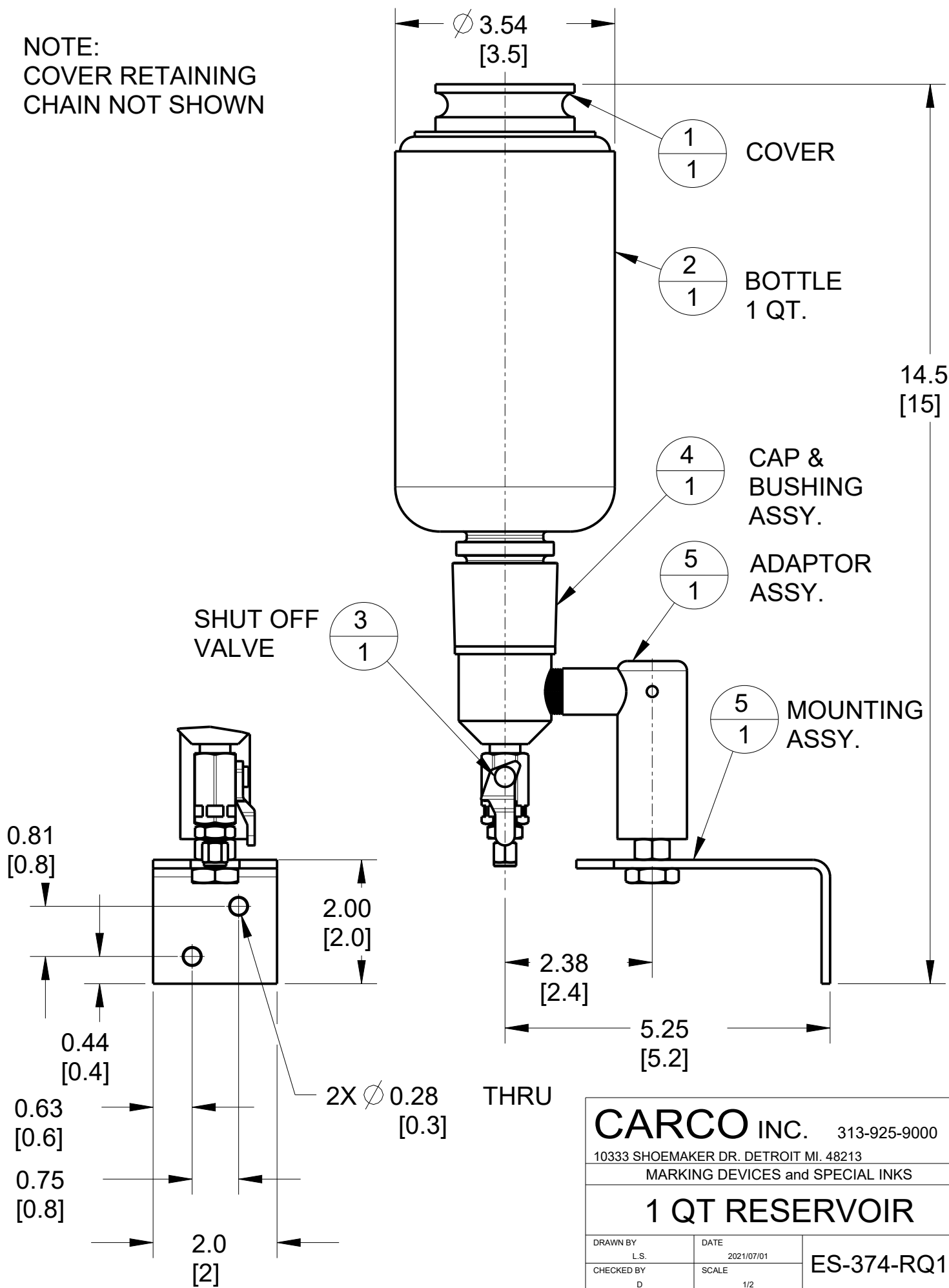


MATERIAL
NYLON

CAPACITY
2 oz. FLUID

CARCO INC.		313-925-9000
10333 SHOEMAKER DR. DETROIT MI. 48213		
MARKING DEVICES and SPECIAL INKS		
2oz RESERVOIR W/SHUTOFF VALVE		
DRAWN BY L.S.	DATE 2021/07/01	ES-374-R27
CHECKED BY D	SCALE 1/1	

NOTE:
COVER RETAINING
CHAIN NOT SHOWN



CARCO INC. 313-925-9000

10333 SHOEMAKER DR. DETROIT MI. 48213
MARKING DEVICES and SPECIAL INKS

1 QT RESERVOIR

DRAWN BY L.S.	DATE 2021/07/01
CHECKED BY D	SCALE 1/2

ES-374-RQ11