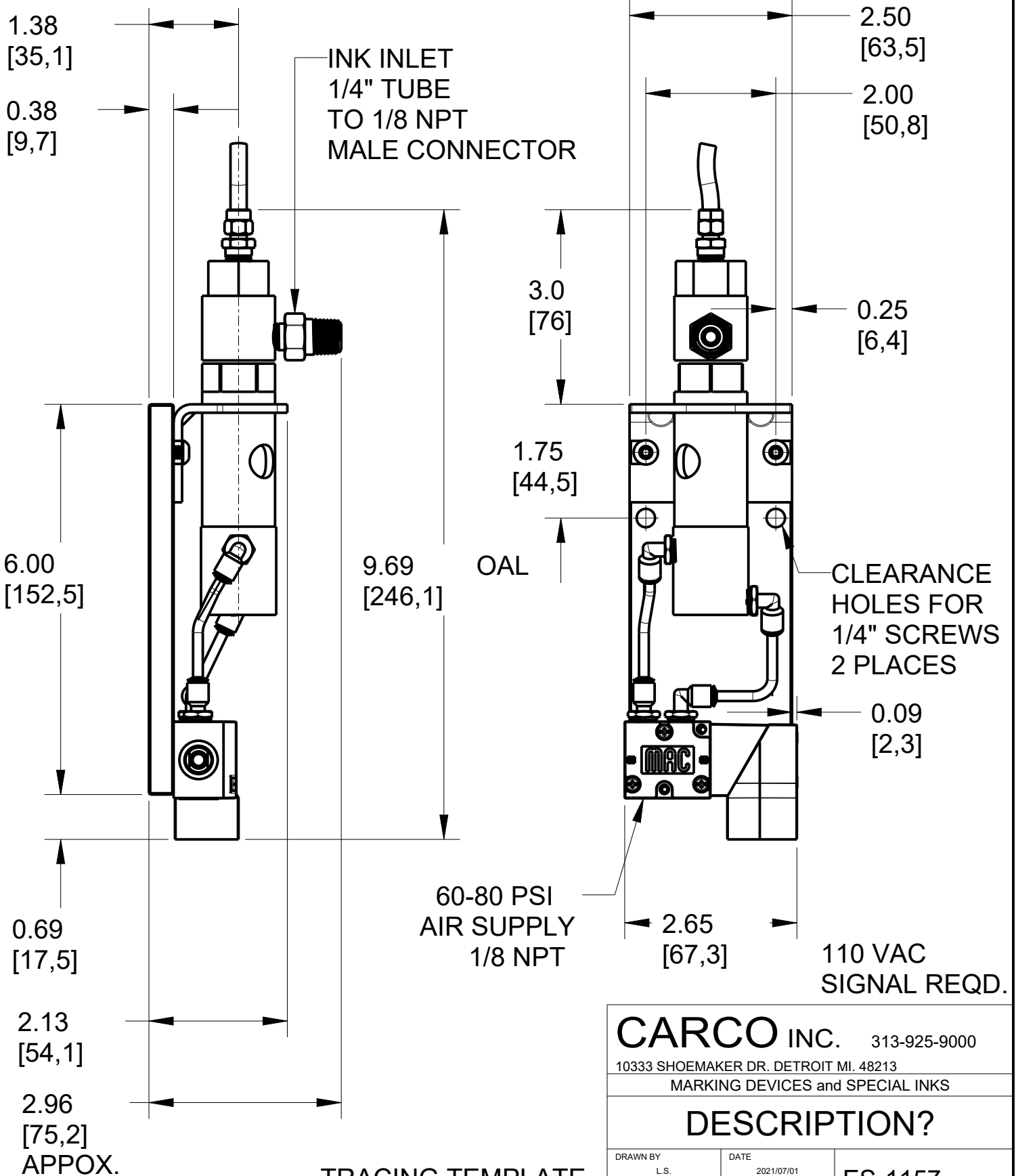


TUBE MAY BE BENT
TO DIRECT LOCATION
OF MARK

(WHEN USED AS NON-CONTACT JET-SHOT)

NOTE: 1/8" O.D. PLASTIC POLYPROPYLENE
TUBING IS SUBSTITUTED FOR THE JET-SHOT
TUBE WHEN INK PUMP IS USED WITH SPRING
MARKER



CARCO INC. 313-925-9000

10333 SHOEMAKER DR. DETROIT MI. 48213

MARKING DEVICES and SPECIAL INKS

DESCRIPTION?

DRAWN BY

L.S.

DATE

2021/07/01

CHECKED BY

D

SCALE

1/2

ES-1157